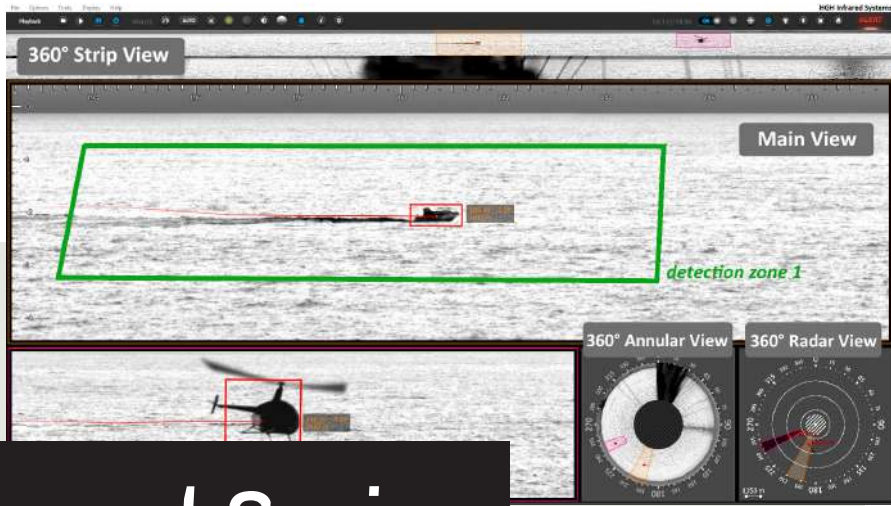




SPYNEL



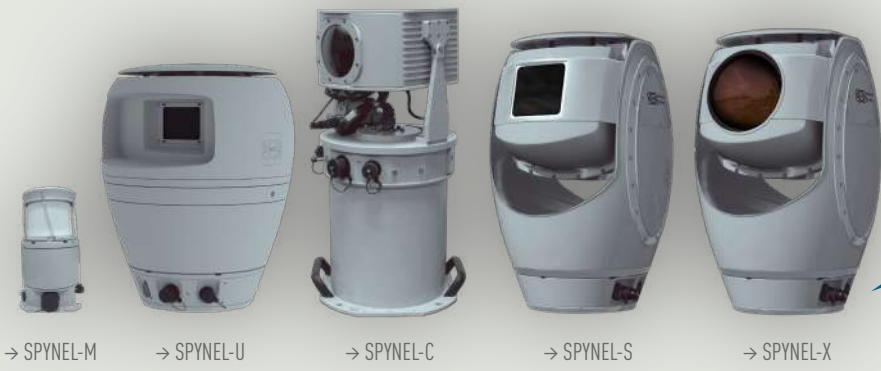
→ 360° situational awareness on one display

Spynel Series

WIDE AREA SURVEILLANCE SYSTEMS

360-DEGREE SITUATIONAL AWARENESS, NIGHT & DAY, UP TO THE HORIZON

SPYNEL sensors are unique passive wide-area surveillance systems with automatic intrusion detection and tracking capabilities for an unlimited number of targets on land, air and sea through all types of inclement weather. These thermal cameras provide outstanding image quality with very high spatial resolution, up to 120 Mpixels, at high rate (up to 2 Hz). Equipped with CYCLOPE, advanced automatic tracking software, they provide unprecedented real-time security against conventional and asymmetrical threats, at any time from any direction, including hardly detectable targets such as: swimmers, RHIBs, wooden boats, speedboat and low altitude air targets. SPYNEL and CYCLOPE tandem is the ultimate solution for wide area surveillance, continuous perimeter security, and critical infrastructure protection for FOBs, air and navy bases, ship auto-protection, oil & gas infrastructures, airports, ports, borders and coasts, industrial sites...



→ SPYNEL SERIES

5 INFRARED RADARS MODELS TO COVER ALL SURVEILLANCE APPLICATIONS



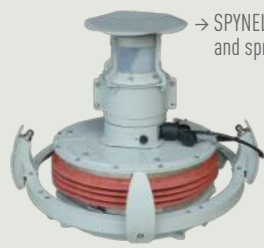
→ SPYNEL-S window cleaning sequence

The Spynel series cover a wide range of applications: perimeter security (industrial sites, nuclear plants, dams, power stations, prisons, solar/wind farms, palaces...), coastal and border passive surveillance, border patrol, military bases/FOB protection, air targets/UAV detection, special operation forces, airport/seaport security, offshore platforms and oil rigs security, fight against piracy, anti-smuggling, search and rescue, collision avoidance system, asymmetric threats detection.

HGHI's specialist team will guide in optimizing the right security system architecture, depending on the project parameters and constraints: required detection and recognition ranges, type of targets to be detected (land, maritime, air), site perimeter and buildings configuration, climatic constraints, fixed or mobile installation, forensic and data storage requirements, maintenance constraints...



→ SPYNEL-C installed on a frigate



→ SPYNEL-M with gyrostabilization and sprinkler systems

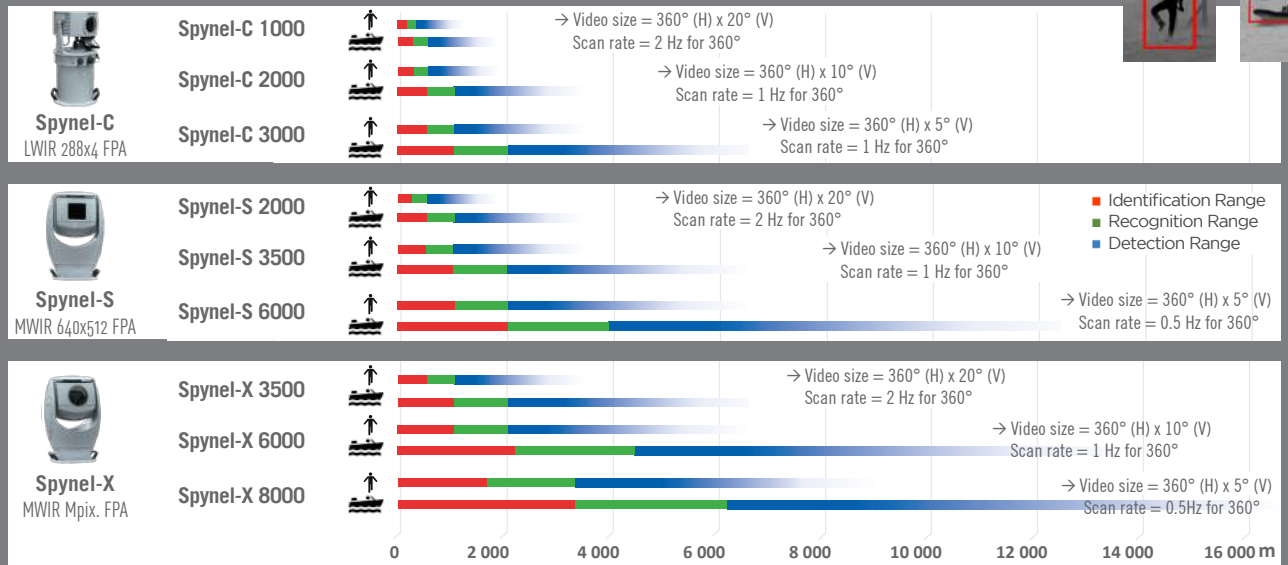


PERFORMANCE

→ Any type of targets detected over 360 degrees

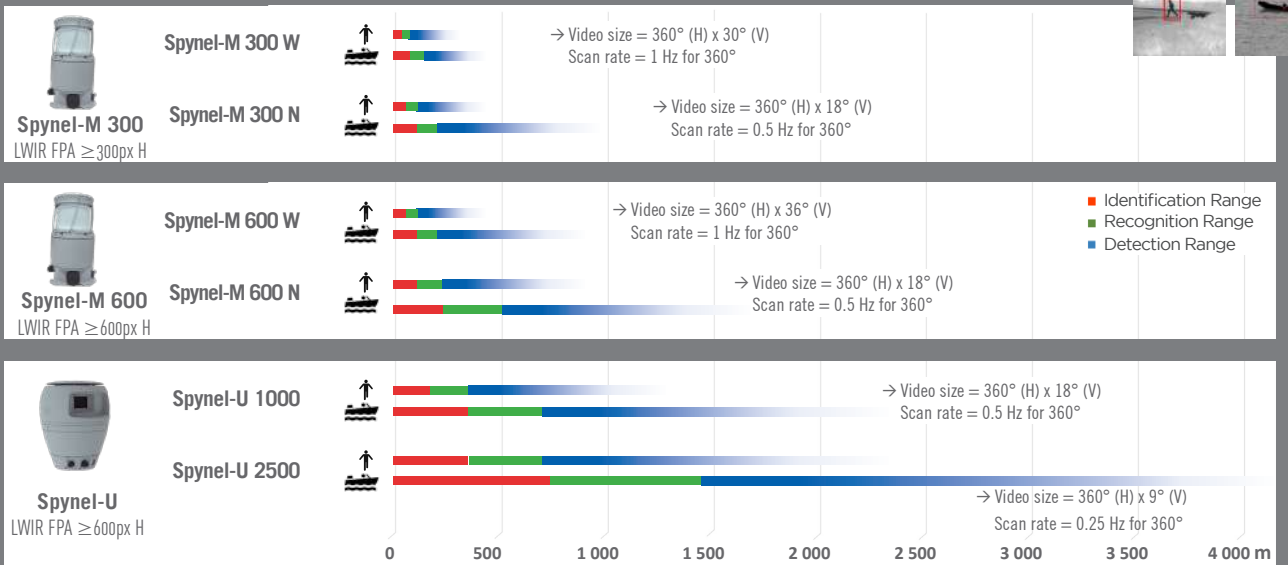
COOLED SENSORS

HUMAN/ RHIB DETECTION, RECOGNITION, IDENTIFICATION RANGES



UNCOOLED SENSORS

HUMAN/ RHIB DETECTION, RECOGNITION, IDENTIFICATION RANGES



DRI ranges according to Johnson criterium and STANAG standards

Above information is subject to changes without notice



Headquarters

HGH SYSTEMES INFRAROUGES
 10 rue Maryse Bastié
 91430 Igny, France
Phone: +33 1 69 35 47 70
Fax: +33 1 69 35 47 80
Email: sales@hgh.fr

US Office

ELECTRO OPTICAL INDUSTRIES
 320 Storke Rd., Ste. 100
 Goleta, CA 93117, USA
Phone: 805.964.6701
Fax: 805.967.8590
Email: sales@electro-optical.com

Asia Office

ASIA INFRARED SYSTEMS
 541 Orchard Rd., #09-01 Liat Towers
 Singapore 238881
Phone: +65 6933 1394
Email: sales@hgh-infrared.com