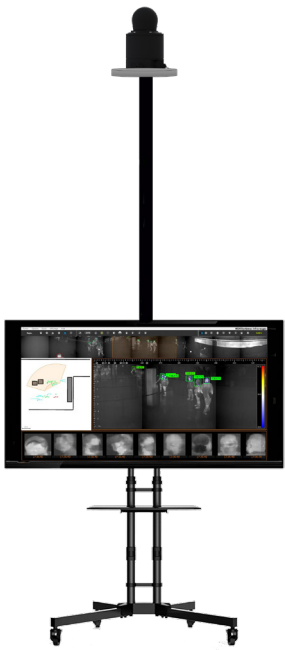




mIRcury: Real-time skin-surface temperature screening in crowds

➤ Since 1982, HGHI has established itself as a leader in terms of innovation in infrared technology. With the Covid-19 pandemic spreading around the globe, we developed a brand new Elevated Body Temperature detection and tracking technology. Our Panoramic Temperature Screening camera mIRcury was designed to measure skin-surface temperatures in wide and crowded environments, in order to achieve fast and efficient preliminary screening in busy public areas.

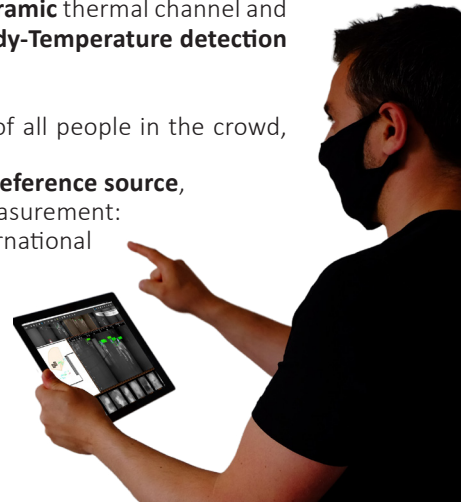


mIRcury is a turnkey and easy-to-use **skin-surface temperature screening solution** designed to simultaneously detect and track elevated body temperatures, in all directions, and at short or long distances.

The comprehensive package includes a **dual camera** with a **panoramic** thermal channel and an optional visible one, operated by a push-button **Elevated-Body-Temperature detection software**.

mIRcury provides a real-time and accurate **temperature view** of all people in the crowd, thus avoiding dedicated route and long queues. As a leader in thermography technology, the use of an external **reference source**, designed by HGHI, guarantees a highly accurate temperature measurement: Our **CN-37 Blackbody** reference source is delivered with an International Primary Standards traceable **certificate of calibration**.

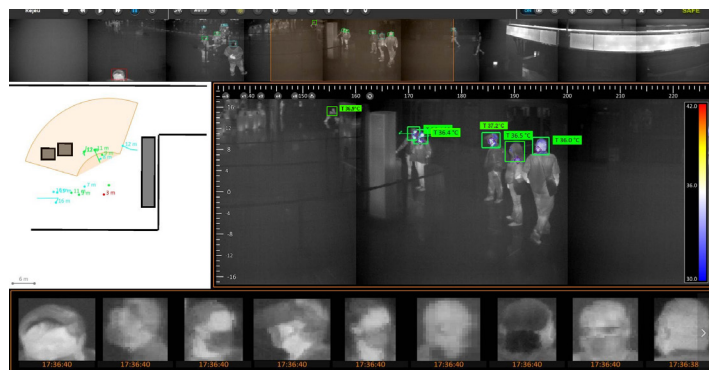
mIRcury temperature screening solution with wireless tablet option ➤



Key Features



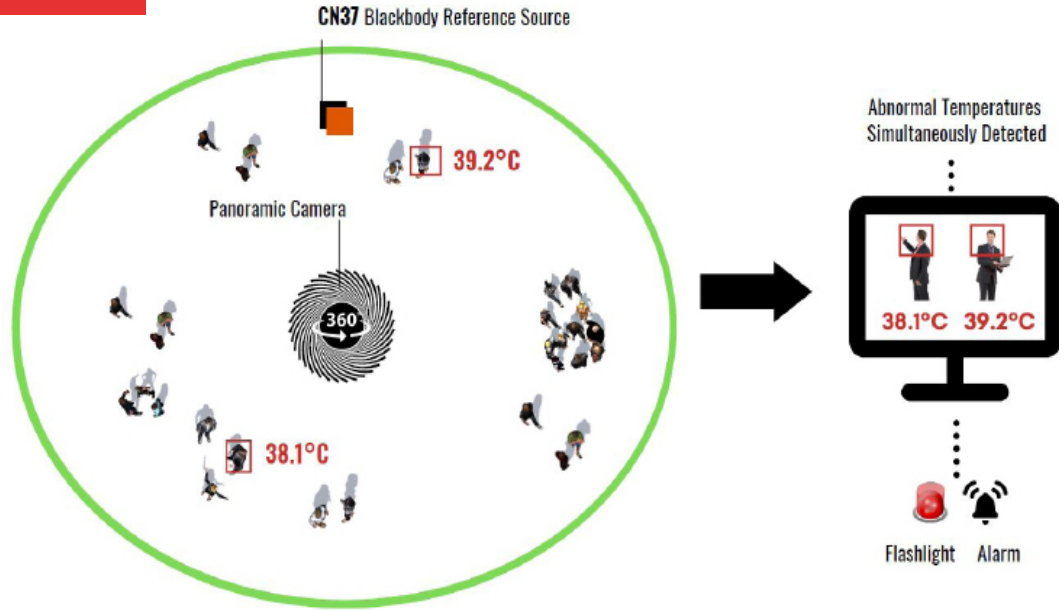
- Simultaneous **multiple & multi-direction** detection of **moving or static** people with elevated skin-surface temperatures
- **High accuracy $\pm 0.3^{\circ}\text{C}$**
- **Wide panoramic** detection range **>1000 sq. m.**
- **Automatic face detection:** people without masks, and false alert filtering to exclude other heat sources (hot cups, mobile phones, laptops...)
- **Automatic notification** sent to operators: photo thumbnails, activation of a flashlight, sound alarm...
- **Timeshift:** record and replay when needed
- Visualize and receive alerts directly on your **tablet via a wireless link**
- Optional **FDA approved IR thermometer** to confirm elevated body temperature.



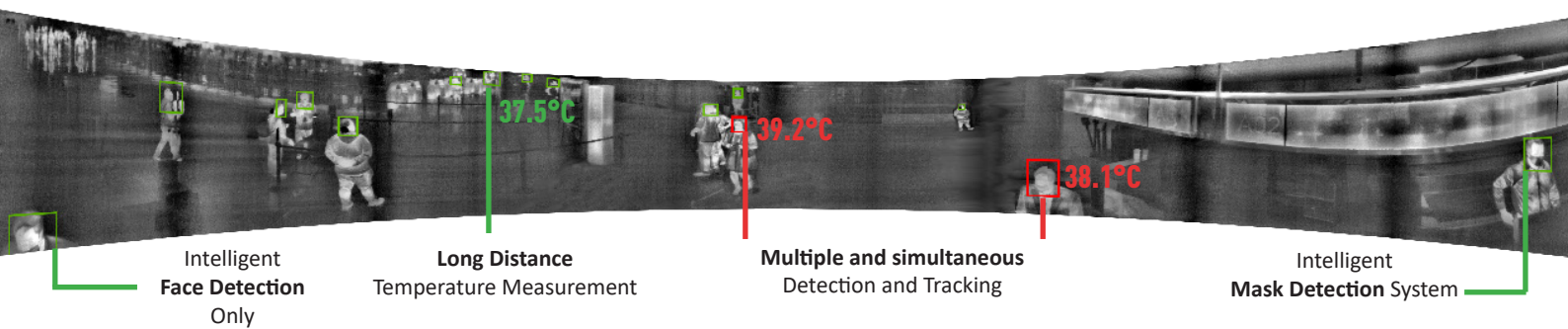
➤ Airport equipped with mIRcury for Panoramic Fever Screening

Panoramic Temperature Screening

The unique **panoramic** screening technology of **mIRcury** captures and checks multiple people with elevated body temperatures, on the fly, wherever they are, whatever their posture within a **1000 sq. m.**



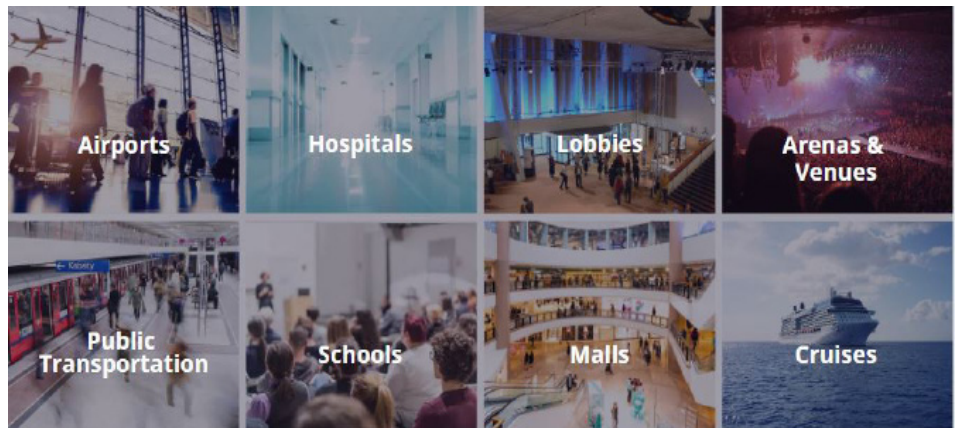
▼ *Panoramic, preventive screening of elevated skin-surface temperature, in wide areas with crowds and a random flow of people.*



Intelligent Face Detection Only Long Distance Temperature Measurement Multiple and simultaneous Detection and Tracking Intelligent Mask Detection System

Benefits & Applications

- Reduce **queues** and long wait times
- Minimize impact on **travellers' experience**
- Reduce man power
- Contact-free



Preliminary screening mIRcury systems are not intended, nor designed, to diagnose or detect medical conditions including, viruses or other illnesses. HGH thermal imaging products should only be used to detect variations of surface temperature. In the event that an elevated skin temperature is detected, the subject should be immediately checked with an approved medical equipment.



www.hgh-infrared.com

Headquarters

HGH SYSTEMES INFRAROUGES
 10 rue Maryse Bastié
 91430 Igny, France
Phone: +33 1 69 35 47 70
Fax: +33 1 69 35 47 80
Email: sales@hgh.fr

US Office

ELECTRO OPTICAL INDUSTRIES
 320 Storke Rd., Ste. 100
 Goleta, CA 93117, USA
Phone: 805.964.6701
Fax: 805 967 8590
Email: sales@electro-optical.com

Asia Office

ASIA INFRARED SYSTEMS
 1 Paya Lebar Link
 #04-01 Paya Lebar Quarter 1
 Singapore 408533
Phone: +65 6933 1394
Email: sales@hgh-infrared.com

Above information is subject to change without notice