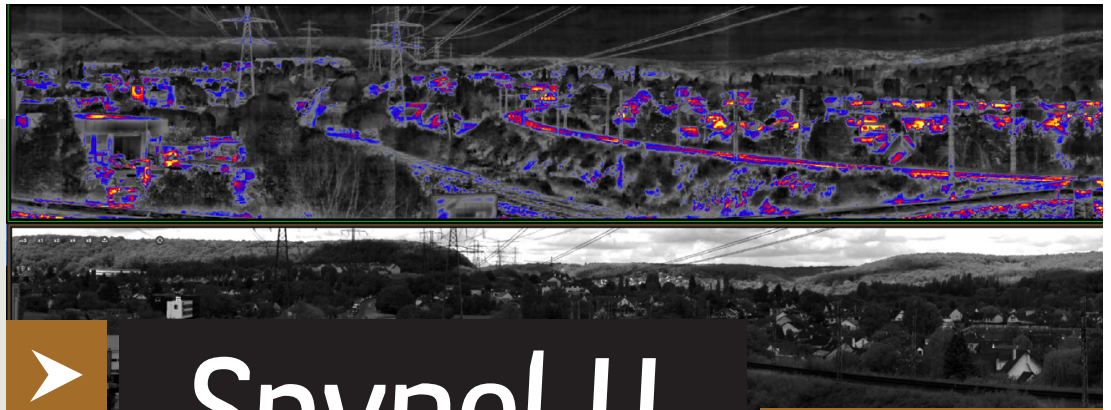




SPYNEL



# Spynel-U

## WIDE AREA SURVEILLANCE SYSTEM

### 360° INTRUSION DETECTION, ANYWHERE, ANYTIME

Spynel is a unique wide-area surveillance system, acquiring real-time full panoramic images with automatic intrusion detection and tracking capabilities. It provides powerful situational awareness through 360 degree visualization of the surroundings. As a completely passive system, it is invisible to intruders, not vulnerable to jamming nor camouflage, and operates 24/7, whatever the weather. The Spynel-U is the uncooled IR version of the Spynel series.

### EARLY TARGET DISCRIMINATION FOR FAST REACTION

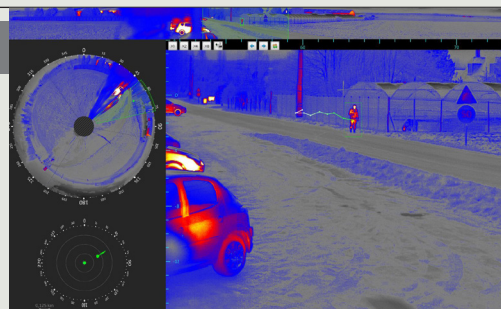
Robust and cost effective, the Spynel-U is the ideal surveillance solution for commercial applications such as airport, port or critical infrastructure perimeter monitoring. One single sensor can monitor large areas and perform multi-events automatic detection in total darkness, fog and smoke, thanks to the 360-degree thermal camera. An unlimited number of targets can be simultaneously tracked, recognized and identified, thanks to the integrated 360-degree visible camera. The Spynel-U does not require any cryogenic cooler, which ensures long-term reliability and maintenance-free operation.



→ SPYNEL-U ROTATING SENSOR

### APPLICATIONS

- Persistent wide area surveillance
- 24/7 perimeter security
- 360° asymmetrical threats detection
- Airport / airfield surveillance
- Critical infrastructure protection
- Border and coastal passive surveillance
- Port monitoring



→ Infrared panoramic detection and visible identification with the same sensor

### BENEFITS

- Cost effective and reliable surveillance against asymmetric threats
- Full 360-degree panoramic coverage with a single sensor
- Day and night panoramic scrutiny even in adverse weather conditions
- Automatic, simultaneous tracking of all threats with superior image quality
- Compact, robust, lightweight equipment, for a fast deployment
- Fully passive system, totally undetectable unlike radar
- Maintenance-free uncooled LWIR detector



→ SPYNEL night&day intrusion detection



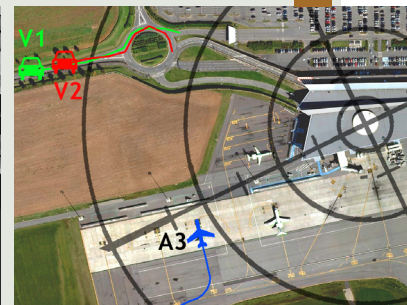
# Spynel-U

PANORAMIC INFRARED

VISION SYSTEM



→ 360-degree port surveillance



→ Tracks displayed on situation map

## TECHNICAL

### SENSOR

	Spynel-U 1000	Spynel-U 2500
Vertical Field Of View	18° (-15° to +3°)	9° (-6.5° to +2.5°)
Horizontal Field Of View	360°	360°
Scanning speed	0.5 rps (360° / 2sec)	0.25 rps (360° / 4sec)
Infrared detector type	Uncooled LWIR FPA (≥ 600 pixels horizontally)	
Infrared image resolution	5 Mpixels	10 Mpixels
Visible detector type	2048 x 1536	
Visible image resolution	50 Mpixels	100 Mpixels
Video output and control	TCP/IP	
Dimensions (Diameter x Height)	400 mm x 500 mm	
Weight	25 kg	
Protection standard	IP 66	
Power supply	24V DC / 10 Amps max at startup	
Detection range for:		
human :	Up to 1 km	Up to 2 km
car :	Up to 2 km	Up to 3.5 km
RHIB :	Up to 2 km	Up to 3.5 km

Detection ranges according to Johnson criterium and STANAG standards

### CONTROL AND DISPLAY SOFTWARE

Software functions: Get full advantage of Spynel sensor with Cyclope software appliance. Cyclope provides, at a glance, real time panoramic display (360° strip, annular, radar & zoom views), multiple screen capabilities, unlimited targets designation/tracking/classification, alarm triggering, immediate threat location (azimuth, elevation, distance), GPS, AIS and radar data integration, automatic control of PTZ systems for target identification, forensic capabilities (timeline, panoramic video recording and playback), spatial and temporal bookmarks, multiple threats displayed on situation map, fine image stabilization and more...

Above information is subject to changes without notice

Above information is subject to changes without notice



EnLighten the Unseen

Contact us: [hgh@hgh-infrared.com](mailto:hgh@hgh-infrared.com) | [www.hgh-infrared.com](http://www.hgh-infrared.com)

**EUROPE**  
HGH SYSTEMES INFRAROUGES  
10 rue Maryse Bastié  
91430 Igny, France  
Phone: +33 1 69 35 47 70

**USA**  
ELECTRO OPTICAL INDUSTRIES  
320 Storke Rd., Ste. 100  
Goleta, CA 93117, USA  
Phone: 805.964.6701

**ASIA**  
ASIA INFRARED SYSTEMS  
1 Paya Lebar Link, #04-01  
Singapore 408533  
Phone: +65 6955 8585