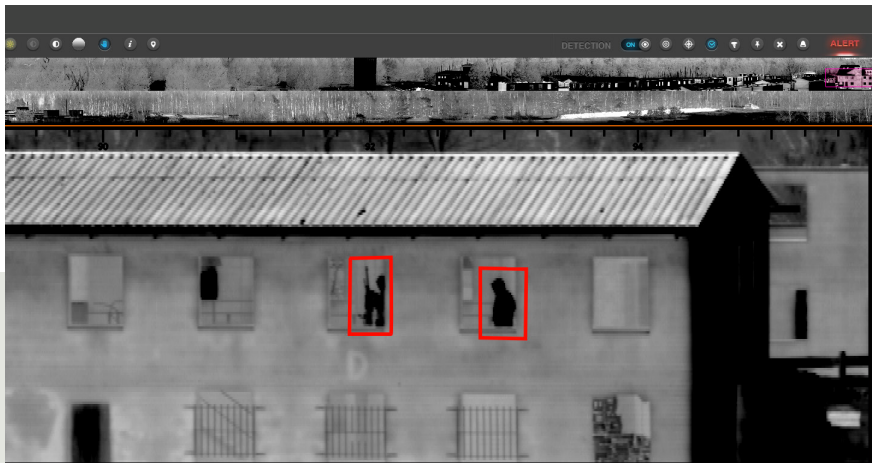


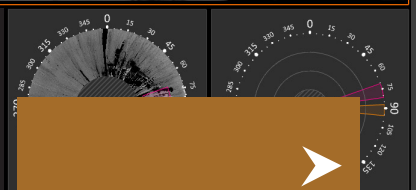


SPYNEL

→ Sniper detection with SPYNEL



Spynel-X



WIDE AREA

SURVEILLANCE SYSTEM

➤ 360° INTRUSION DETECTION, ANYWHERE, ANYTIME

Spynel is a unique wide-area surveillance system, acquiring real-time full panoramic images with automatic intrusion detection and tracking capabilities. Capturing videos with an unequalled resolution of up to 120 Mpix, Spynel-X provides powerful situation awareness over 360 degrees, with the highest detection range in its category. Associated with Cyclope advanced intrusion detection software, it provides unprecedented real-time security against conventional and asymmetrical threats, in the whole surroundings, up to the horizon.

➤ EARLY TARGET DISCRIMINATION FOR FAST REACTION

Compact and robust, Spynel can be quickly deployed to perform early intrusion alert over extremely large areas in total darkness, fog, smoke. An unlimited number of tracks are simultaneously identified on highly resolved images, including hardly detectable threats, such as crawling men, RHIBs, UAVs, stealth aircrafts. As a completely passive system, it is invisible to intruders, cannot be tricked by camouflage nor jamming. It operates 24/7, whatever the weather. Using a high-end MWIR sensor, Spynel-X exhibits high performance, including in warm and humid regions.



→ SPYNEL-X
ROTATING SENSOR

➤ APPLICATIONS

- Persistent wide area surveillance
- 24/7 perimeter security
- 360° asymmetrical threats detection
- Airport / airfield surveillance
- Critical infrastructure protection
- Surveillance of forward operating bases
- UAV, low air target tracking
- Border and coastal passive surveillance
- Self-protection of ships
- Fight against piracy and smuggling

➤ BENEFITS

- Top-of-the-range system in the Spynel series
- Cost effective and reliable surveillance system
- Full 360-degree panoramic coverage with a single sensor
- Long range surveillance up to the horizon
- Day and night panoramic scrutiny even in adverse weather conditions
- Automatic, simultaneous tracking of all threats with superior image quality
- Compact, robust, lightweight equipment, for a fast deployment
- Fully passive system, totally undetectable

→ Automatic detection, recognition, identification, classification

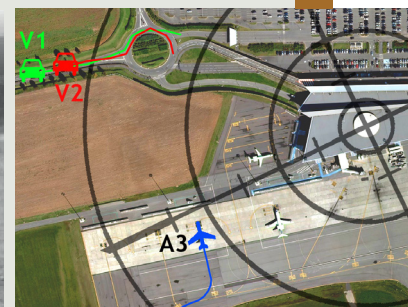




TECHNICAL



→ SPYNEL-X threat detection & identification over 360°



→ Tracks displayed on situation map

SENSOR

	Spynel-X 3500	Spynel-X 6000	Spynel-X 8000
Horizontal FOV	360°	360°	360°
Vertical FOV	20°	10°	5°
Vertical motorized tilt	± 45°	± 45°	± 45°
IFOV	0.3 x 0.3 mrad x mrad	0.15 x 0.15 mrad x mrad	0.08 x 0.08 mrad x mrad
Scanning speed	2 rps (360°/0.5sec)	1 rps (360°/sec)	0.5 rps (360°/2sec)
Detector type	MWIR megapixel FPA	MWIR megapixel FPA	MWIR megapixel FPA
Cooling	Stirling microcooler	Stirling microcooler	Stirling microcooler
Image resolution	23 000 (H) x 1280 (V)	46 000 (H) x 1280 (V)	92 000 (H) x 1280 (V)
Video output and control	IP	IP	IP
Dimensions(Dia x H)	385 mm x 580 mm	385 mm x 580 mm	385 mm x 580 mm
Weight	< 40 kg	< 40 kg	< 40 kg
Operating temperature	-40°C to +71°C	-40°C to +71°C	-40°C to +71°C
Protection standard	IP 66	IP 66	IP 66
Power supply	24V DC / 10 Amps	24V DC / 10 Amps	24V DC / 10 Amps
Detection range for			
human :	Up to 2.5 km	Up to 5 km	Up to 9 km
car :	Up to 5 km	Up to 9 km	Up to 12.5 km
RHIB :	Up to 5 km	Up to 9 km	Up to 12.5 km

Detection ranges according to Johnson criterium and STANAG standards

CONTROL AND DISPLAY SOFTWARE

Software functions: Get full advantage of Spynel sensor with Cyclope software appliance. Cyclope provides, at a glance, real time panoramic display (360° strip, annular, radar & zoom views), multiple screen capabilities, unlimited targets designation/tracking/classification, alarm triggering, immediate threat location (azimuth, elevation, distance), GPS, AIS and radar data integration, automatic control of PTZ systems for target identification, forensic capabilities (timeline, panoramic video recording and playback), spatial and temporal bookmarks, multiple threats displayed on situation map, fine image stabilization and more...

Above information is subject to changes without notice

Above information is subject to changes without notice