



SPYNEL-U

Wide Area Surveillance Solution



10Mpix day/night panoramic video



Uncooled LWIR Thermal sensor

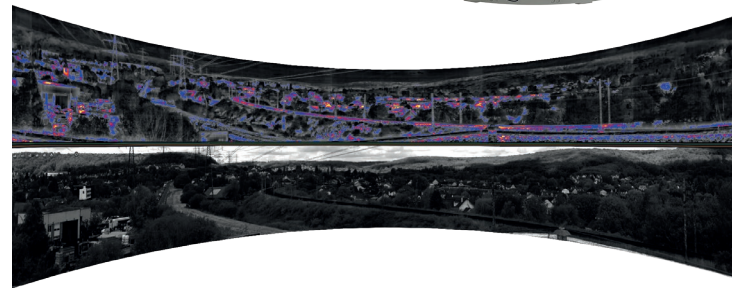


Human detection range up to 2km

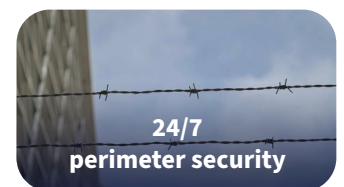
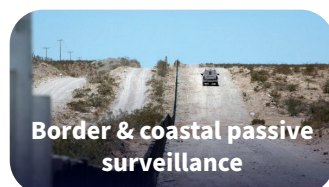
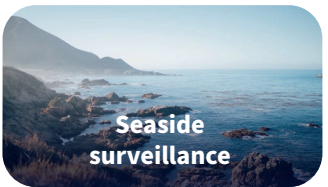
DUAL CHANNEL PANORAMIC SURVEILLANCE SENSOR

SPYNEL® are proven wide-area surveillance solutions, acquiring real-time panoramic thermal images with automatic detection, tracking and classification capabilities thanks to the integrated CYCLOPE software.

SPYNEL®-U integrates two channels with LWIR uncooled and visible detectors in order to provide real time thermal and visible panoramic videos.



APPLICATIONS






BENEFITS

- Day and night panoramic imaging even in adverse weather conditions
- Thermal and Visible panoramic video for enhanced identification capabilities
- Human, vehicle or RHIB detection capabilities
- Uncooled thermal technology: maintenance-free
- Automatic tracking & classification of any ground/sea threats
- Passive operation, unlike radars (undetectable, no EM disturbance)
- Proven, reliable and COTS technology
- All events recorded over 360°

SPYNEL-U

Wide Area Surveillance Solution

TECHNICAL SPECIFICATIONS

	SPYNEL-U 1000	SPYNEL-U 2500
Horizontal FOV	360°	360°
Vertical FOV	18° (-15° to +3°)	9° (-6.5° to +2.5°)
Scanning speed	0.5 rps (360° / 2sec)	0.25 rps (360° / 4sec)
Infrared detector type	Uncooled LWIR FPA (≥ 600 pixels horizontally)	
Infrared image resolution	5 Mpixels	10 Mpixels
Visible detector type	2048 x 1536	
Visible image resolution	50 Mpixels	100 Mpixels
Video output and control	TCP/IP	
Dimensions (Diameter x Height)	400 mm x 500 mm	
Weight	25 kg	
Protection standard	IP 66	
Power supply	24V DC / 10 Amps max at startup	
Detection range for		
Human: 	Up to 1 km	Up to 2 km
Vehicle: 	Up to 2 km	Up to 3.5 km
RHIB: 	Up to 2 km	Up to 3.5 km

Detection ranges according to Johnson criterium and STANAG standards

CONTROL AND DISPLAY SOFTWARE



Advanced video processing

Artificial Intelligence, smart image enhancements, detection/classification algorithms, data fusion



Multi-layer display

Real-time panoramic or zoom display, geolocation of threats



High integration capabilities

ONVIF, H264, XML, MIME, TCP/IP, Client/Server



Advanced Alarm Management

Track analysis to trigger alarms and customized security actions



Enlighten the Unseen

Contact us: hgh@hgh-infrared.com | www.hgh-infrared.com

EUROPE

HGH SYSTEMES INFRAROUGES

10 rue Maryse Bastié
91430 Igny, France
Phone: +33 1 69 35 47 70

USA

ELECTRO OPTICAL INDUSTRIES

320 Storke Rd., Ste. 100
Goleta, CA 93117, USA
Phone: 805.964.6701

ASIA

ASIA INFRARED SYSTEMS

1 Paya Lebar Link, #04-01
Singapore 408533
Phone: +65 6955 8585